



Nu'uano YMCA Day Camp Newsletter

Week 9: July 29 - August 2, 2024

Weekly Theme: ALOHA SUMMER

NU'UANU YMCA

1441 Pali Hwy
Honolulu HI 96813
ymcahonolulu.org

Day Camp Site Phone Number

808.445.1386

Summer Day Camp Staff

AM Site Coordinator
Ms. Angela

AM Youth Leaders / Aides

Mr. Moses / Ms. Ciara
Ms. Sammy
Mr. James / Ms. Sara
Mr. Jamie
Mr. Sunny / Ms. Kylie

PM Site Coordinator
Ms. Kristen

PM Youth Leaders / Aides

Mr. Celeste
Ms. Tiffany
Mr. Sanford
Mr. Leighton
Ms. Morgan / Mr. Jayden

Program Hours

Monday-Friday

7:00am - 5:30pm

Drop-Off: 7:00am - 8:00am

Pick-Up: 5:00pm - 5:30pm

NOW HIRING!

Hiring youth leaders
for up to \$19 per hour:
get free YMCA
membership, 60% off
camps & childcare,
paid training, & more!



bit.ly/YMCAJobDetails

Refer a new hire and
earn \$250 in Y credits
for camps, swim
lessons, and more!



bit.ly/4aU20kU

Watch or share this fun
video!

ALOHA FAMILIES & FRIENDS,

It has been a summer that I hope we will all never forget. There were challenges that I hope we were all able to get through each day on a strong foot and together. Unfortunately, we will be saying ALOHA SUMMER and taking our last adventure with an on-site water play day on **Wednesday, July 31st, 2024**. This day will include water relays for all-day campers. Please have your child packed & prepared with the following items to participate: swim clothes, towel, change of clothes, slippers (REQUIRED), sunscreen & a plastic bag for wet items. Check out the Activity Schedule below.

Parents, please feel free to contact Ms. Angela or Ms. Kristen if you have any questions or concerns. Your involvement and feedback help us make this program the best it can be. Let's make this summer unforgettable together!

Mahalo nui loa,

The Nu'uano YMCA Summer Day Camp Staff

ACTIVITY SCHEDULE - SUBJECT TO CHANGE

Mon. July 29	Tues. July 30	Wed July 31	Thurs. Aug 1	Fri. Aug 2
GYM DAY Mondays & Wednesdays 12:00p - 2:00p All Groups will rotate	SWIM DAY Grades K-2: 12:30p-1:15p Grades 3rd-6th: 1:30p - 2:15p	DAY CAMP ALOHA SUMMER WATER PLAY DAY ALL GROUPS 9:00a - 11:30a GYM DAY Mondays & Wednesdays 12:00p - 2:00p All Groups will rotate	SWIM DAY Grades K-2: 12:30p-1:15p Grades 3rd-6th 1:30p - 2:15p	ALL GROUPS: ALOHA SUMMER MINI CARNIVAL 10:00a- 12:00p

DROP-OFF & PICK-UP

DROP-OFF:

- 7:00am - 8:00am in the LOWER PARKING GARAGE
- Drive-thru drop-off will be in the LOWER parking garage on the Pali Highway side of the building.
- If dropping off after 8:00am, please park in the YMCA's front parking lot and walk your child(ren) up to the Youth Department - 2nd floor.

Afternoon Pick-Up:

- 5:00pm - 5:30pm at KEELIKOLANI MIDDLE SCHOOL
- Drive-thru pick-up is across Vineyard Blvd. at Keelikolani Middle School (formally known as Central Middle School). Enter the school on Queen Emma Street, drive all the way down, and turn around. Staff will direct you where to stop. Your child will be walked to your vehicle.
- 100% ID CHECKS - For SAFETY purposes: Have your valid picture ID ready; only authorized persons will be authorized to sign your child(ren) out.
- Groups will start transition to the Middle School @ 4:45pm to be @ the p/u area by 5:00pm. Please DO NOT pick up your child(ren) during the 4:45p transition time. Please remain in your car until ALL day campers are SAFE, seated & settled.
- If you plan to pick up your child(ren) before the 4:45 pm transition time, please park in the YMCA's front parking lot and walk to the Youth Department on the 2nd floor.

Notes:

- If you drop off or pick up your child(ren) outside of the times listed above, please notify us at 808.445.1386 so we can await for your child(ren)s arrival.
- A late fee of \$5.00 per child/family for every 5-minute increment the child(ren) is picked up after the 5:30 p.m. program closing time will be implemented.

FREE DAILY HOT LUNCH!

- The Nu'uaniu YMCA Day Camp site has been approved for the USDA free lunch service program.
- All day campers must submit a completed and signed USDA form by their parent or guardian on/by the first day of Day Camp. Forms are available at your site.
- Lunch begins at 12:00 pm daily.



WHAT TO BRING EVERY DAY

- Pack enough snacks for the morning & afternoon. We are a NUT-FREE program.
- Reusable water bottle
- Sunscreen (label with first/last name)
- A Mat/towel to sit on
- An extra change of clothes for "just in case" in a plastic bag

Please LABEL all of your children's belongings with their first & last name

SAFETY AROUND WATERS & REC. SWIM

- Tuesdays & Thursdays
- Groups K-2nd @ 12:30p - 1:15p and Groups 3rd-5th @ 1:30p - 2:15p.
- Please send your child(ren) with w/the following items:
 - Towel & rubberband for children w/long hair past their shoulders
 - Change of clothes
 - Bag for wet clothes and slippers on the scheduled swim day
 - Apply sunscreen @ home. Children are encouraged to apply and re-apply sunscreen as needed themselves.
 - Label ALL belongings

GYM DAY

- Monday & Wednesday @ 12:00p - 2:00p: All Groups will rotate

NEED TO KNOW

NOT ATTENDING, LATE, OR NEED TO ADD ANOTHER AUTHORIZED PICK-UP PERSON?

If your child(ren) will not be participating in the program, will be late, or you would like to add an additional authorized person to p/u your child(ren), please call/text the Summer Day Camp Site Coordinators at 808.445.1386.

INCURSION/EXCURSION

Please pick up a permission form on your first day of camp from your site for the dates of each incursion/excursion. The form must be filled out, signed, and submitted, or your child(ren) will not be able to participate in field trips and swim sessions.

ALLERGIES/MEDICAL CONDITION

Please let us know if your child has any allergies or medical conditions.

HEROIC JOURNEY AT HOME

Friendship

Good friends make our lives better. This week, we will talk about what makes a good friend and how to keep our friendships strong.

Parent Video

bit.ly/4bGEKbp



HAWAIIAN WORD OF THE WEEK

Pilialoha - Friendship

KIDZLIT - BOOK OF THE WEEK

"All People Are Beautiful"

BY: Vincent Kelly

Kids' literature helps engage students with simple ideas and moral lessons of the book.

PROMOTIONS

Save \$99 on new Y Memberships!

Y Family Members enjoy free childwatch while yworking out; and up to 20% off programs, camps, and classes!



bit.ly/4azhJpE

Y Programs & Classes!

Art, Dance, Martial Arts, Sports, and more at the Y. Family members of the Y enjoy discounts of up to 20%!.



bit.ly/3Q49V7J

LET'S GO CAMPING!

Camp Erdman Family Camps are all-inclusive!

You can also rent beachfront cabins or yurts!



bit.ly/CampErdman



Hawai'i SUN Bucks (also called Summer EBT) provides \$177 to help families buy groceries for school-aged children who qualify for free or reduced-price school meals.

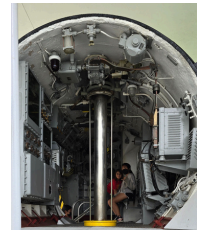
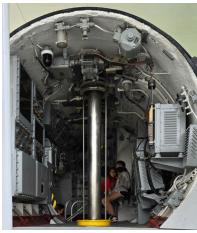
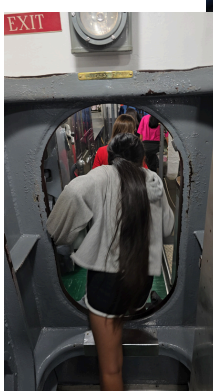
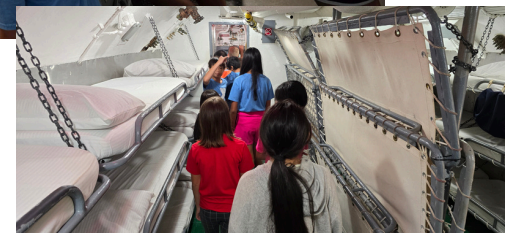
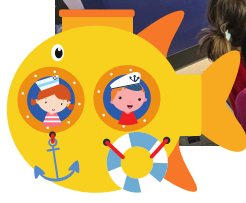
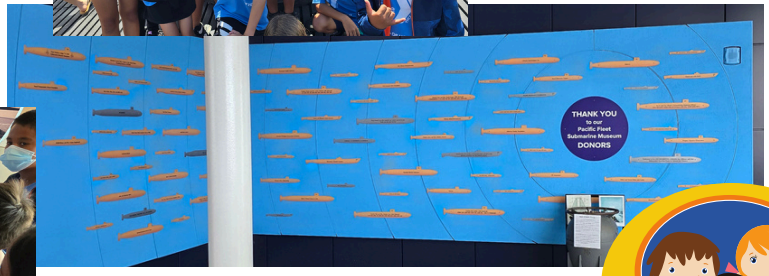
Most eligible children should receive a pre-loaded SUN Bucks EBT card in the mail in late July.

If not, check the SUN Bucks website for details on qualifications and apply - it takes less than 10 minutes!

But hurry, you need to apply by August 4. Scan for details:



bit.ly/3A0FQRi



The SDC Groups 4 & 5 were lucky enough to go an adventure visit to the Pacific Fleet Submarine Museum. Thank you Susan for having a bingo activity for the groups to do. It was enjoyable to see the children work together to helping others with the bingo. We also got to tour one of the submarine that was docked. From where they sleep, where they roamed, ate, restroom & etc. Here are a few snapshots. Mahalo Susan for allowing us to visit the museum & for providing lunch. We enjoyed our time there!