



Kaimuki Day Camp Newsletter

WINTER BREAK 2025 [WEEK 1]

[Night Before Christmas]



KAIMUKI-WAIALAE YMCA

4835 Kilauea Ave
Honolulu HI 96816
ymcahonolulu.org

Winter Day Camp Staff

AM: Keitha Green

PM: Chevy Ishida

Site Coordinator

Tania Brown

Youth Director

Email: tbrown@ymcahonolu.org

Program Hours

Monday-Friday

8am-4:30pm

Drop-Off: 7am-8am

Pick-Up: 4:30pm-5:30pm

Day Camp Site Phone Number

808-492-6609



Please

**HAVE
YOUR
I.D.
READY**

ALOHA E:

Welcome to Winter Break at the Kaimuki YMCA. We have a fun-filled week of looking at the old time tale of "The Night Before Christmas". We will also be doing a few activities from the 2nd Step curriculum. Please be on the lookout for our **FAMILY ENGAGEMENT** flyer.

OFF-SITE ADVENTURES

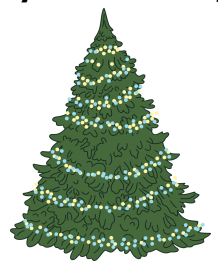
Our off-site adventure will take us to **FUN FACTORY**. Nothing screams fun like YMCA will take care of \$10 of the admission. Please provide \$15 for the rest of the amount. If that is not possible for this break, your child will still get a \$10 card to play with. The Party Card consists of: 25 Free swipes on the ticket and claw machines and 90 minutes of unlimited play on the Red, White, and Blue machines.

ACTIVITY SCHEDULE

Mon Dec. 22	Tues Dec. 23 <i>Fun Factory 1</i>	Wed Dec. 24 <i>SWIM 1 & 2 Fun Factory 3</i>	Thur Dec. 25 <i>No Program</i>	Fri Dec. 26 <i>SWIM 3 Fun Factory 2</i>
What is your Elf's Name?	Santa Letters/ Create envelopes	Elf Headband		Christmas Charades
All About Me Christmas Edition (3rd-5th) All about me Christmas Tree (K-2nd)	Capture the snowball	<i>Pick-up no later than 2p</i>		Popcorn Ball

KONA ICE FRIDAYS

Friday, Dec. 26th at 2pm, Kona Ice Truck will be stopping at your branch. We will provide a pre-order QR code for you once we get it.



IMPORTANT INFORMATION

- DROP-OFF: 7am- 8am and PICK-UP: 4:30pm-5:30pm- If you will be dropping off or picking up your child(ren) outside of the times listed above, please notify us at **808-492-6609**.
- 100% ID CHECKS – For SAFETY purposes, please have your ID ready to present when picking up your child(ren).
- Please pack a lunch and 2 snacks- one for AM and one for PM. We are a NUT-FREE program, please do not pack snacks containing nut products.
- Please send your child(ren) with a reusable water bottle.
- **Swim Days: Tuesday or Thursday** Please send your child(ren) with sunscreen, a towel, extra clothes, a bag for extra clothes, and slippers on their swim day.

My Daily Checklist for KAIMUKI DAY CAMP

Snack

- NO PEANUTS PLEASE
- Two snacks (Morning and Afternoon)

Lunch [Please make sure they have their utensils if needed]

- NO PEANUTS PLEASE
- Water Bottle



Please remember to keep your youth at home if they are not feeling well, have a fever, or per CDC guidelines are required to quarantine.

Activity Supplies:

- Crayons/Pencils/Markers
- Scissors
- Erasers
- Glue

Shoes (for outdoor play) and/or slippers for indoor use

- Shoes are the recommended footwear at all times

Tuesday or Thursday POOL DAY:

- Swimwear or clothes to get wet in
- Sunscreen lotion
- Change of clothes in a plastic bag
- Towel
- Slippers
- Bag for wet clothes

Drop-Off/Pick-Up Items (No more than 2): These items will be used during Drop-off and Pick-up times ONLY!

- Books
- Journal
- Coloring Books
- Playing Cards
- Fidget Toy
- Only 1 electronic Device

REMIND YOUR CHILD THAT ALL PERSONAL ITEMS WILL REMAIN IN THEIR BAGS BETWEEN 8 am-4:30p

Please make sure to check with your child that they have the following everyday before coming to the program. Mahalo!

10 Fun Family Activities

1. Complete a puzzle
2. Play with water beads
3. Have your own Chopped or Top Chef competition
4. Paper airplane contest
5. Tie-dye or paint family t-shirts
6. Create with Perler Beads
7. Have a Bike/Toy/Car wash
8. Grow a Garden
9. Have a Lego competition
10. Learn a TikTok dance together

PROMOTIONS

TUTU'S WELLNESS CHALLENGE

- Free and open to the public!
- All registrants entered for weekly prizes
- Complete 12 of 25 wellness activities for grand prize drawing



bit.ly/41eaNgp

FREE Y TEEN CLUB

- Grades: 6th - 12th
- Afterschool & some weekends.
- Experience the best of YMCA's teen programs, including academic support, enriching activities, island-wide adventures and more!



bit.ly/YTeenClub

SWIM LESSON REGISTRATION

- Opens Mon, Dec 8, 8:30 am
- Session: Jan - Mar 2026
- Y Family Members save 20%
- Financial Aid Available



bit.ly/47yNyOG

EXPANDED PRESCHOOL FINANCIAL AID!

- Family of 4 up to \$184,896 annual income qualify



bit.ly/TheYPreschool

BEACHFRONT HALE, CABIN, AND YURT RENTALS AT CAMP ERDMAN

- Special rates for Kama'āina



bit.ly/3T7IZFM

ALL-INCLUSIVE CAMP ERDMAN FAMILY CAMPS

Private cabins, all-inclusive: Meals & Activities

- Holiday: Dec 19-21



bit.ly/459aIJT

FINANCIAL AID AVAILABLE

- For Programs, Camps, Membership



bit.ly/YMCAid

The best of all gifts around any Christmas tree: the presence of a happy family all wrapped up in each other.

